



Setting up Virtual Serial Ports with SDRUno.

6/19/2017

Virtual Serial Comport Emulator VSPE is intended to help software engineers and developers to create/debug/test applications that use serial ports. It is able to create various virtual devices to transmit/receive data. Unlike regular serial ports, virtual devices have special capabilities: for example, the same device can be opened more than once by different applications, that can be useful in many cases. With VSPE you can share physical serial port data for several applications.

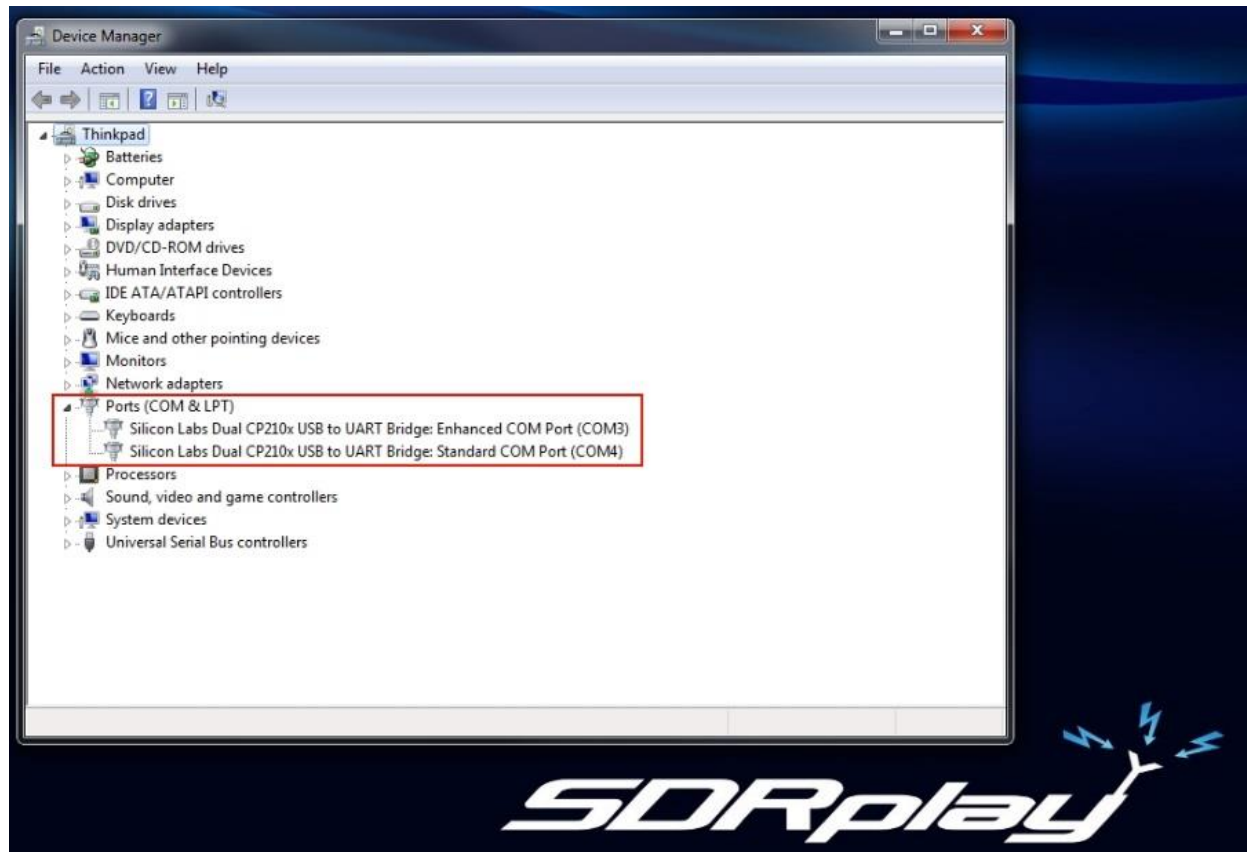
The screenshot shows the Eterlogic VSPE website. The main heading is "VIRTUAL SERIAL PORTS EMULATOR THE EMULATION SOLUTION". Below this, there is a "Version information: 0.938.4.846" section with a list of updates: "Added ESD device", "TcpServer and TcpClient devices now supports COM port read-only and COM port write-only modes", "Fixed bug with localization of the device properties dialog", "Added ability to reorganize devices (move up and down) when emulation is stopped", "Fixed bug with COM port speed selection from Combo box (added missed values)", "Reinitialization of failed devices (see Preferences => Advanced tab) disabled by default", "Fixed French translation", "File data stream: added output ability, now it can be used to write output to file", and "Updated documentation". A "Recent changes" button is also present. The "DESCRIPTION" section states: "VSPE is intended to help software engineers and developers to create/debug/test applications that use serial ports. It is able to create various virtual devices to transmit/receive data. Unlike regular serial ports, virtual devices have special capabilities: for example, the same device can be opened more than once by different applications, that can be useful in many cases. With VSPE you are able to share physical serial port data for several applications, expose serial port to local network (via TCP protocol), create virtual serial port device pairs and so on." The "KEY FEATURES" section lists: "Virtual device: connector", "Virtual device: data splitter", "Virtual device: per", "Mapper device", "User mode device: TcpServer", "User mode device: TcpClient", "User mode device: Serial Redirector", and "User mode device: UDP Manager". On the left, there are links for "NEWS", "PRODUCTS", "DOWNLOADS", "FEEDBACK", "FORUM", and "SCREENSHOTS". On the right, there are links for "VIRTUAL DRIVE SDK", "VIRTUAL SERIAL PORTS EMULATOR", "SECRETDRIVE", "INTERNET TV PLAYER", and "WEBSITE NEWS".

Download and install VSPE

The 32bit driver edition is free and the 64bit driver edition is not.

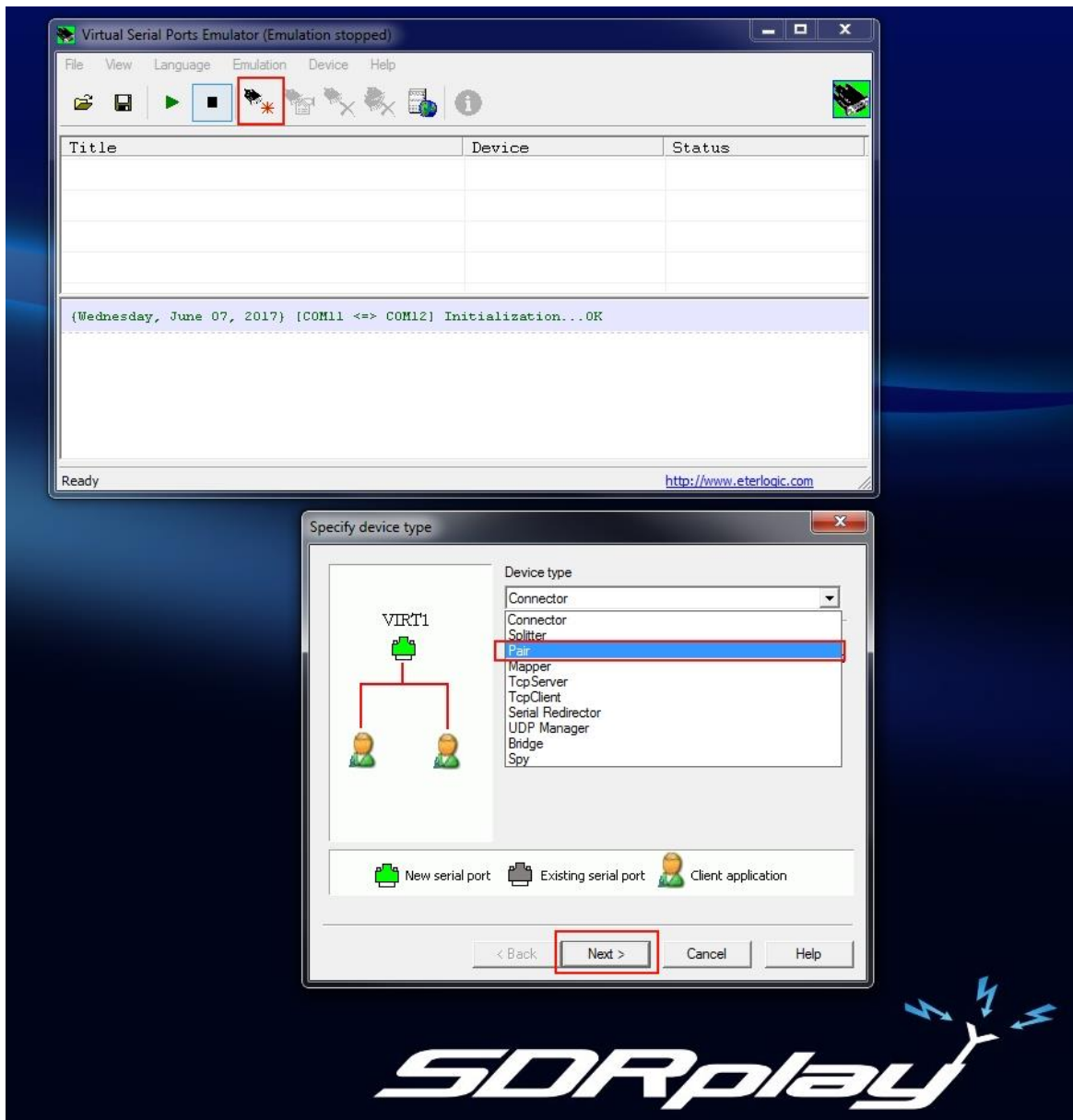
<http://www.eterlogic.com/Products.VSPE.html>

Launch your device manager from the Control Panel as shown.



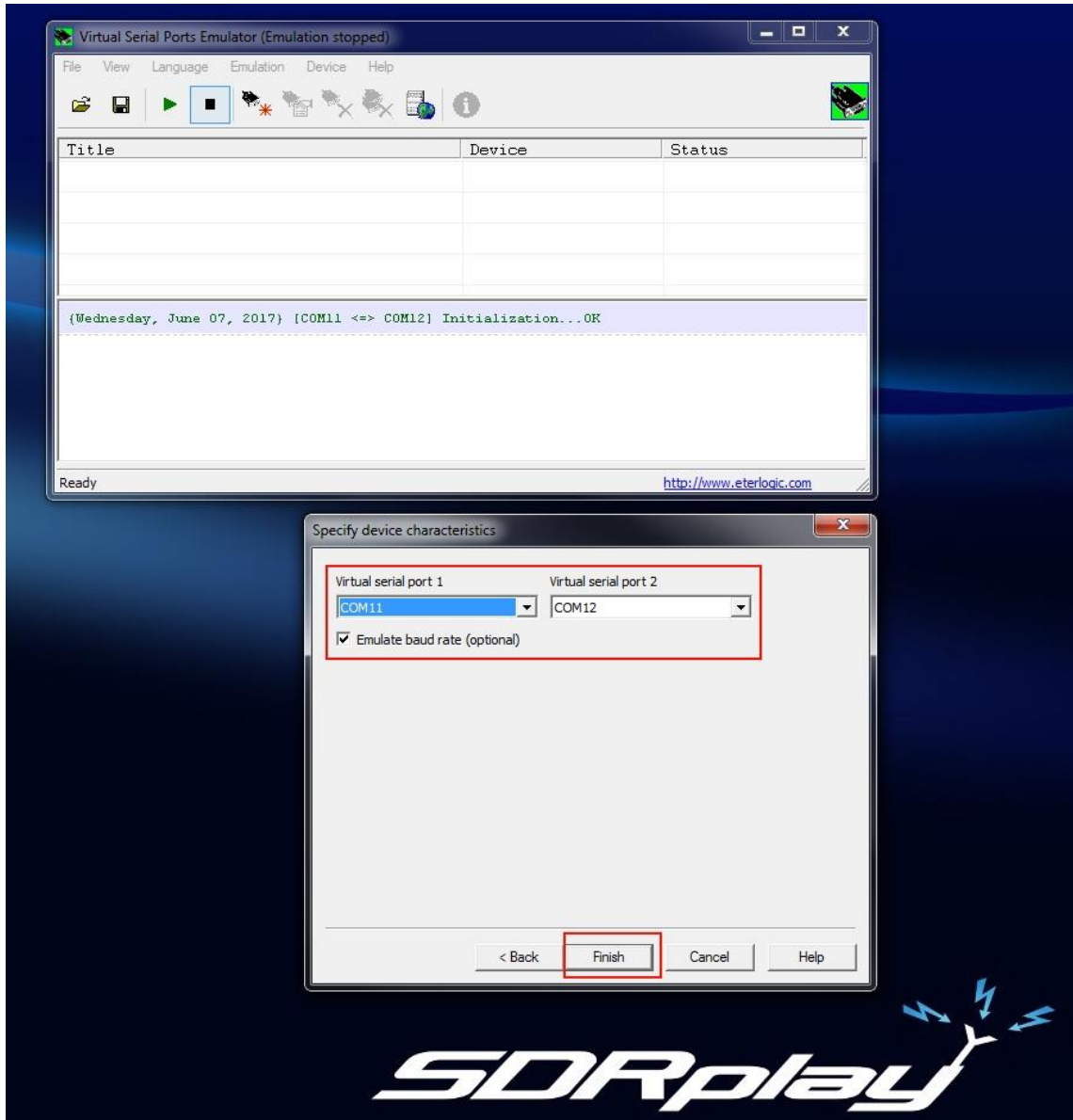
* Note any com port already setup in your system. We do not want to create a pair that will conflict with real hardware com ports.

Launch VSPE.



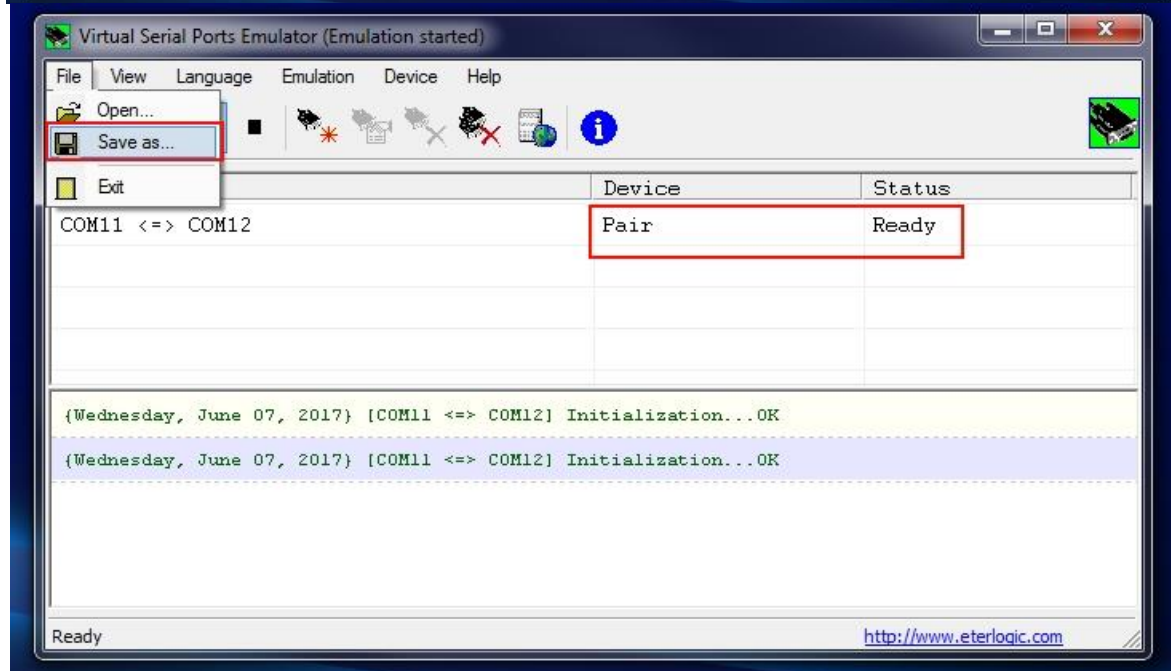
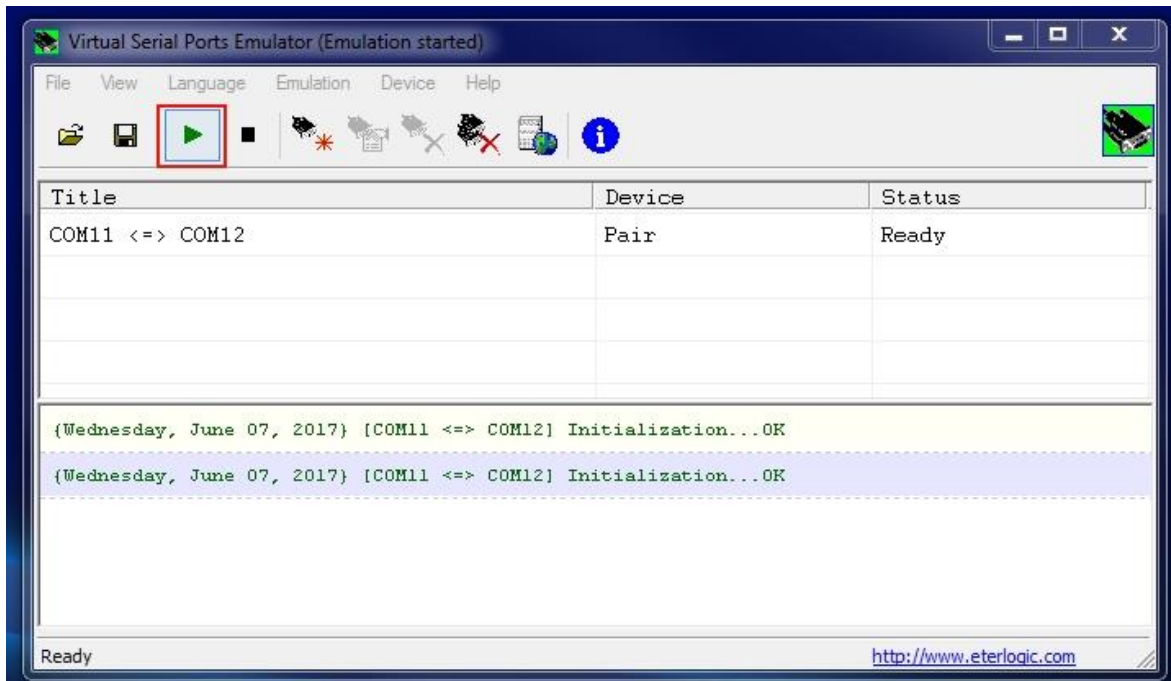
- * Navigate to the to the Create new device button as shown.
- * Select Pair.
- * Click next.

Set the Virtual Serial Port virtual pair.



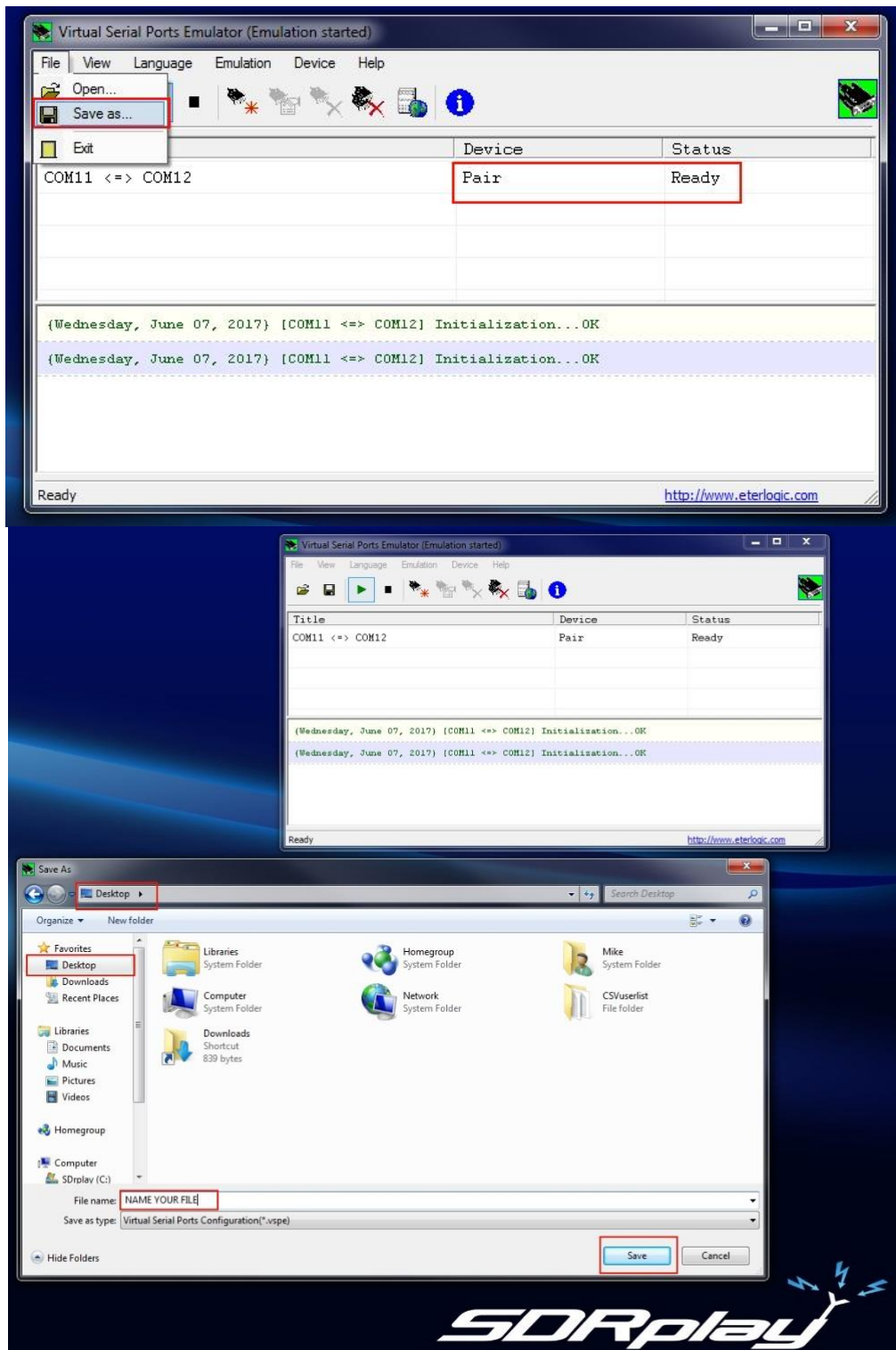
- * Create a Virtual serial port 1 and 2 as shown.
- * Select a number higher than what you have in your device managers com ports ie: COM11 and COM12.
- * Enable Emulated baud rate (optional) .
- * Click Finish.

Enable the new Virtual Serial Port virtual pair.



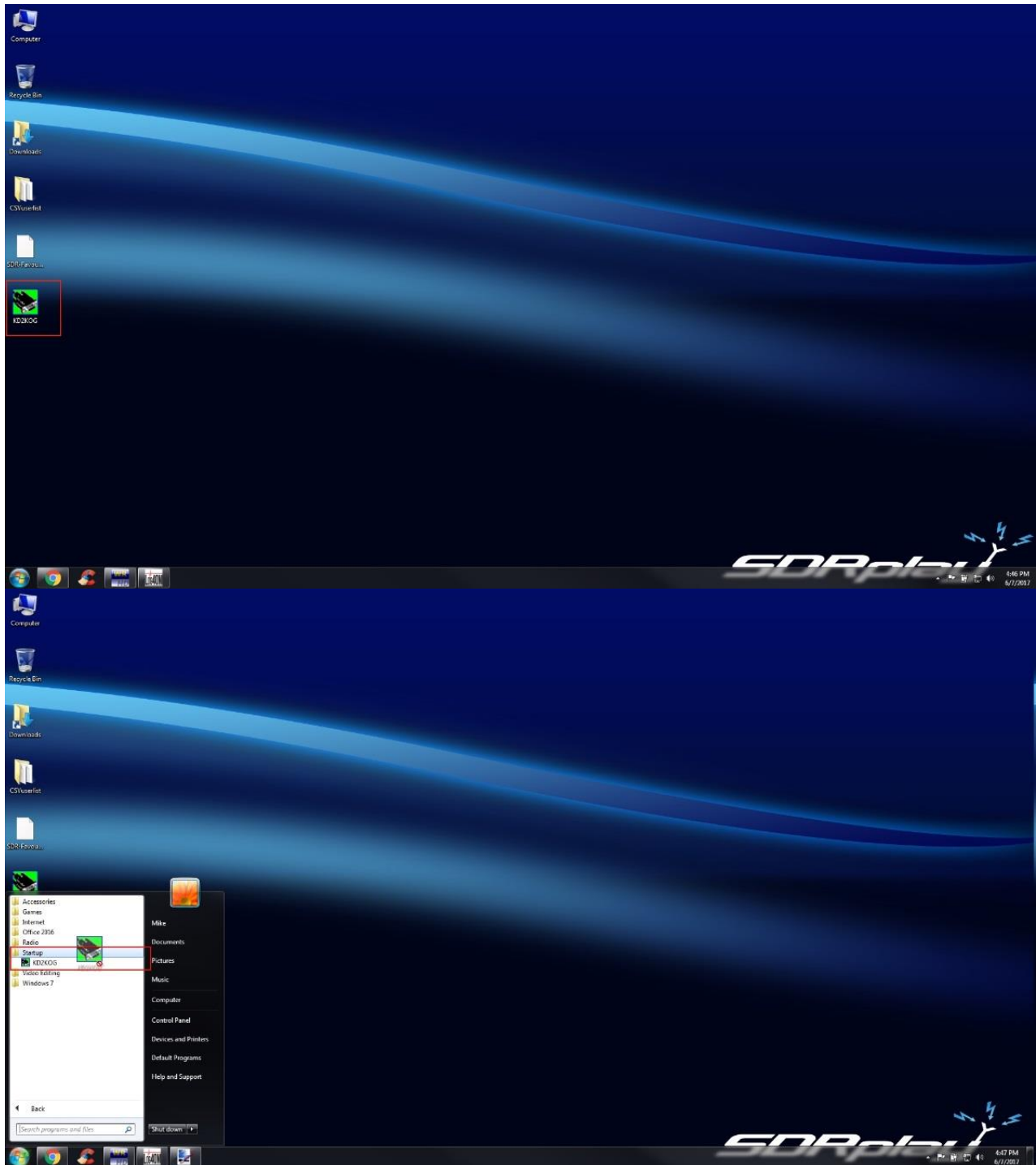
- * Click the Play icon as shown.
- * Note the dialog below (Initialization...OK).
- * Note the status of the new pair showing Ready.

Save the Virtual Serial Port virtual pair config file.



- * Click file Save as.
- * Navigate to your Desktop.
- * Name your config file.
- * Click Save.

Move the config file into your Start/Startup.



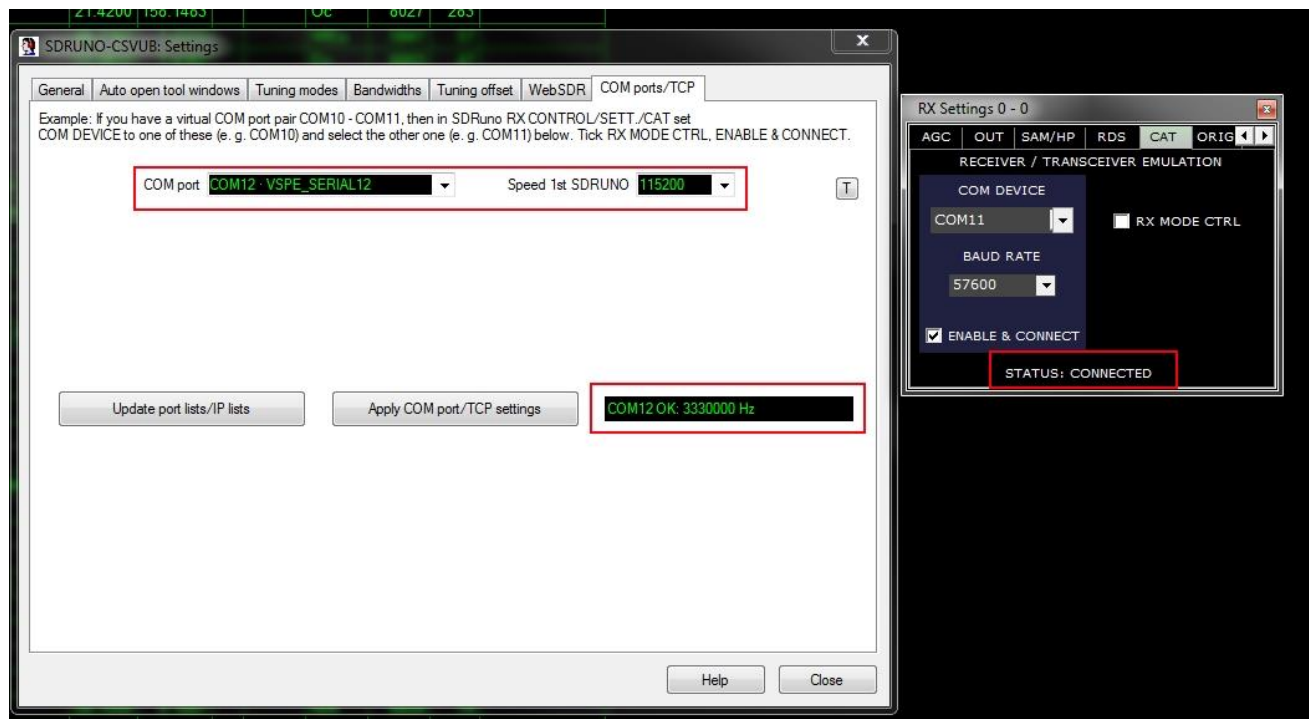
- * Select the new config file created and drag and move over your WINDOWS LOGO.
- * Place the file into your Startup folder.

Launch SDRuno.



- * In the RX CONTROL module hit SETT. Navigate to the CAT tab.
- * In the CAT tab under COM DEVICE click the drop down and select COM 11 (1 of the 2 virtual com ports we created). Leave RX MODE CTRL unchecked.
- * Click ENABLE & CONNECT
- * Note the Status: shows CONNECTED.
- * Save your workspace. (MAIN Module)

Launch the app that needs com port pairs. ie:CSV user list browser.



* Find the config area of your program COM DEVICE and select COM 12 (2 of the 2 virtual com ports we created).