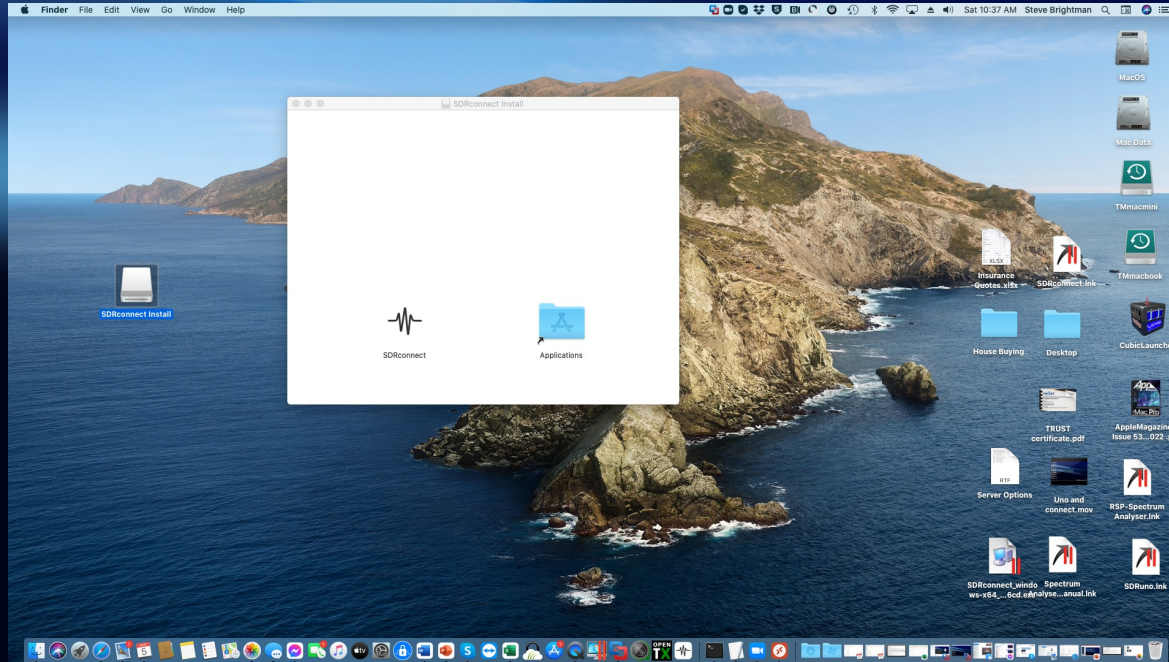


SDRconnect Installation Guide



(VID641)

Agenda

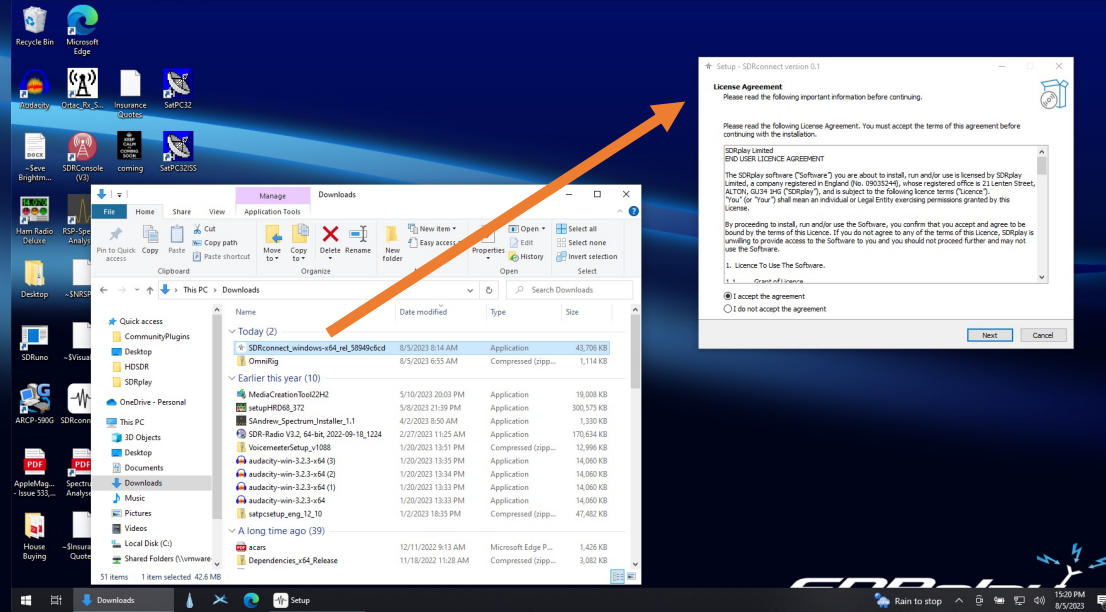
- . Windows
 - . Installation
 - . Starting the Server
- . Raspberry Pi / Linux
 - . Installation
 - . Starting the Server
- . Mac
 - . Installation
 - . Starting the Server

Note: this guide was prepared for the first public release of SDRconnect. Additional ease of use improvements and changes are expected soon after release. Please check sdrplay.com for the latest updates



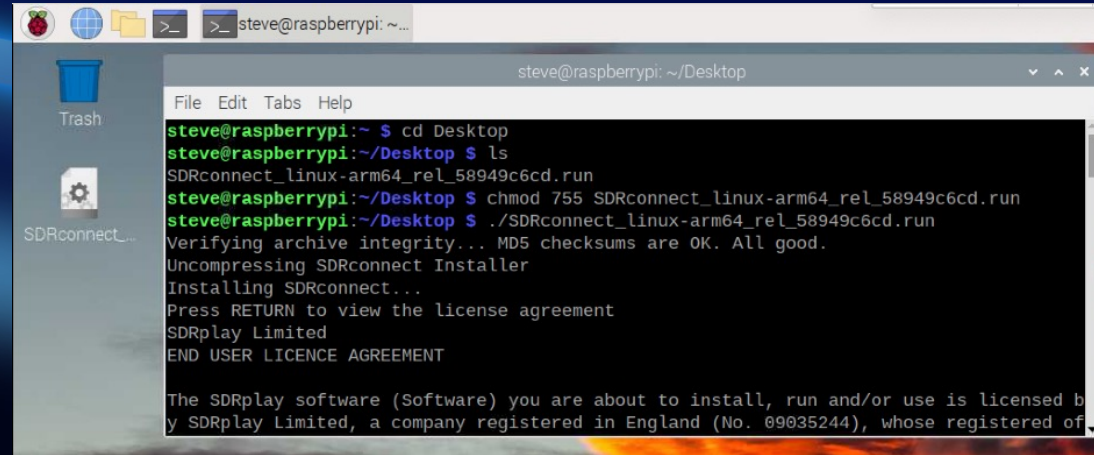
Windows Installation

- Download the Installer:
 - Locate in “Downloads”
 - Double click the installer
 - Follow the prompts
- Running SDRconnect
 - Double click the shortcut on the desktop (or use the Windows Start menu)

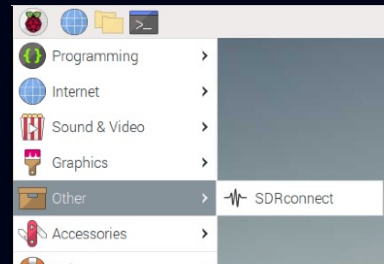


Raspberry Pi Installation

- Download the Installer
- Open Terminal:
 - `cd Desktop`
 - `chmod 755 <filename>`
 - `./<filename>`
- Running SDRconnect
 - Click on the “Raspberry”
 - Select SDRconnect from the “Other” menu

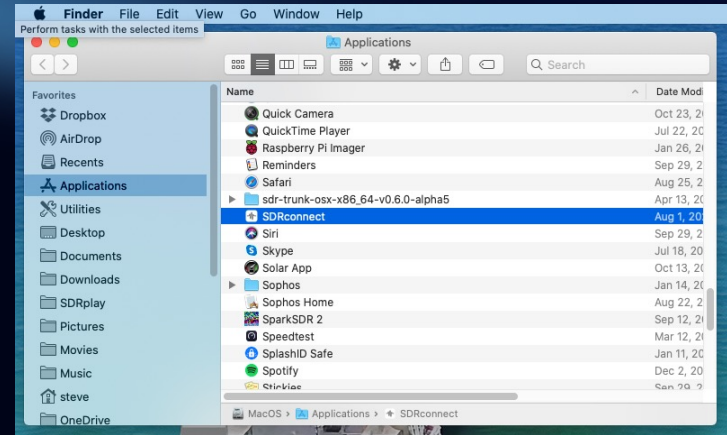
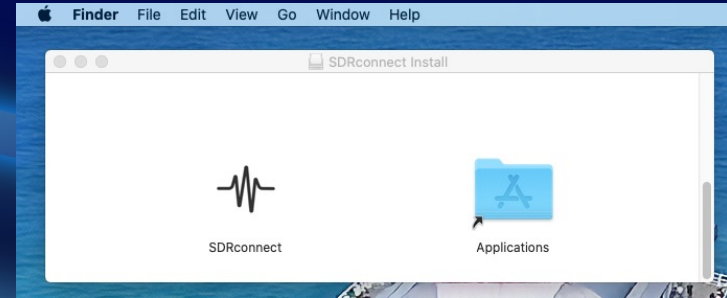


```
steve@raspberrypi: ~  
File Edit Tabs Help  
steve@raspberrypi:~$ cd Desktop  
steve@raspberrypi:~/Desktop $ ls  
SDRconnect_linux-arm64_rel_58949c6cd.run  
steve@raspberrypi:~/Desktop $ chmod 755 SDRconnect_linux-arm64_rel_58949c6cd.run  
steve@raspberrypi:~/Desktop $ ./SDRconnect_linux-arm64_rel_58949c6cd.run  
Verifying archive integrity... MD5 checksums are OK. All good.  
Uncompressing SDRconnect Installer  
Installing SDRconnect...  
Press RETURN to view the license agreement  
SDRplay Limited  
END USER LICENCE AGREEMENT  
  
The SDRplay software (Software) you are about to install, run and/or use is licensed by SDRplay Limited, a company registered in England (No. 09035244), whose registered of
```



Mac Installation

- Download the Installer
 - Double click on the file
 - Drag SDRconnect to your Applications folder
- Running SDRconnect
 - Double click on SDRconnect in your Applications folder



If you want to run the Server:

- **Mac:**

```
cd /Applications/SDRconnect.app/Contents/MacOS/  
./SDRconnect --server
```

- **Windows:**

```
cd "C:\Program Files\SDRplay\SDRconnect"  
.\SDRconnect --server
```

- **Linux / Pi:**

```
cd /opt/sdrconnect  
./SDRconnect --server
```



Server Settings

```
Usage: SDRconnect --server [--help] [--version] [--listdevices]
      [--hwser=<serialNumber>] [--port=<portNumber>] [--ip=<ipAddress>]
      [--samplerate=<sampleRate>] [--centerfrequency=<centerFrequency>]
      [--bias=<biasTenable>] [--antenna=<antennaNumber>]
      [--rfnotch=<rfNotchEnable>] [--dabnotch=<dabNotchEnable>]
      [--lnastate=<lnaState>] [--ifgr=<ifGr>] [--ifagc=<ifagcEnable>]
      [--setpoint=<setPoint>] [--agc-attack=<agcAttack>] [--agc-decay=<agcDecay>]
      [--agc-decay-delay=<agcDecayDelay>] [--agc-decay-threshold=<DecayThreshold>]
      [--exclusive] [--max-clients=<maxClients>]
```

```
--server      (Required) Starts the server engine
--help        Print this help information
--version     Print the application version number
--listdevices Print a list of connected devices
--exclusive   Prevent ANY client from accessing the hardware controls
```

```
<serialNumber> RSP serial number
<portNumber>   Listen on TCP port number (default is 50000)
<ipAddress>    Listen on TCP IP Address (default is 0.0.0.0 which is any)
<maxClients>  maximum number of allowed clients (default = 8)
```

```
<sampleRate>  Hardware sample rate in Hz (default is 2000000)
<centerFrequency> Hardware center frequency in Hz (default is 100000000)
<biasTenable>  disable = 0, enable = 1 (default is 0)
<antennaNumber> Ant A/Tuner 1 50ohm = 0, Ant B/Tuner 2 = 1, Ant C/HiZ = 2
<rfNotchEnable> disable = 0, enable = 1 (default is 0)
<dabNotchEnable> disable = 0, enable = 1 (default is 0)
<lnaState>    Range is dependant on RSP and center frequency 0=max gain
<ifGr>        Range is 20 to 59 (default is 40)
<ifagcEnable> disable = 0, enable = 1 (default is 1)
<setPoint>    default = -30 dbFS, range is normally -20 to -72
<agcAttack>   default = 500 ms, range is 0 to 1000
<agcDecay>    default = 500 ms, range is 0 to 1000
<agcDecayDelay> default = 200 ms, range is 0 to 1000
<DecayThreshold> default = 5 dB, range is 0 to 20
```

To list the options:

```
SDRconnect --server --help
```

Server Tools

Server Setup

Device Settings

- Can be overridden by first Client,
- Unless --exclusive option is specified

Server Running Example

```
MacOS — SDRconnect — SDRconnect --server --port=50000 — 104x30
steve@StevesMini MacOS % /Applications/SDRconnect.app/Contents/MacOS/SDRconnect --server --port=50000
SDRconnect Network Server (c655ed1cf)

Listening on IP address: 0.0.0.0 (Any)
Listening on Port: 50000

Found 1 device
Opened device S/N: 1700001190

Sample Rate: 2 MSPS
Center Frequency: 100 MHz
IF Gain Reduction: 40 dB
LNA State: 0
IFAGC Mode: Enabled
IFAGC SetPoint: -30 dBFS
IFAGC Attack: 500 ms
IFAGC Decay: 500 ms
IFAGC Decay Delay: 200 ms
IFAGC Decay Threshold: 5 dB
Bias-T Disabled
Antenna: 0
RF Notch Disabled
DAB Notch Disabled
Hardware Control: 1st Client can control the hardware
Maximum number of clients: 8

Server started
Press CTRL-C to stop the server
Client connected (10.0.0.180:59629) Total number of clients connected = 1
```


Thank you for watching

For further information please visit our website:

www.sdrplay.com

